

BOUTWELL BUSINESS CENTER

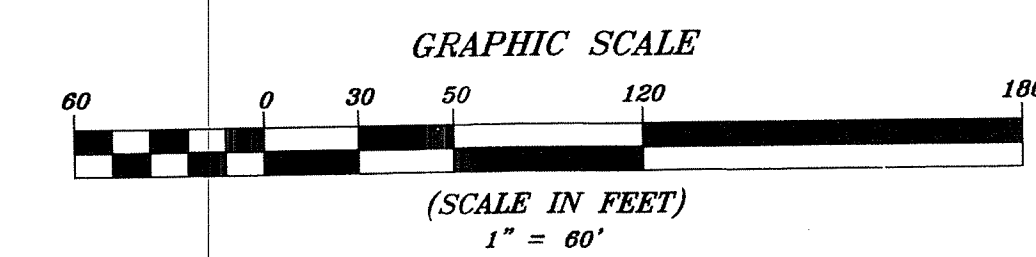
BEING A REPLAT OF A PORTION OF THE PLAT OF BOUTWELL INDUSTRIAL PARK AS RECORDED IN PLAT BOOK 106,
 PAGES 182 AND 183 AND LYING IN SECTION 20, TOWNSHIP 44 SOUTH, RANGE 43 EAST,
 CITY OF LAKE WORTH, PALM BEACH COUNTY, FLORIDA,
 JULY 2016
 SHEET 2 OF 2

STATE OF FLORIDA }
 COUNTY OF PALM BEACH } S.S.
 THIS INSTRUMENT WAS FILED FOR
 RECORD AT _____
 THIS ____ DAY OF _____
 2016 ____ AND DULY RECORDED
 IN PLAT BOOK NO. _____
 ON PAGE _____

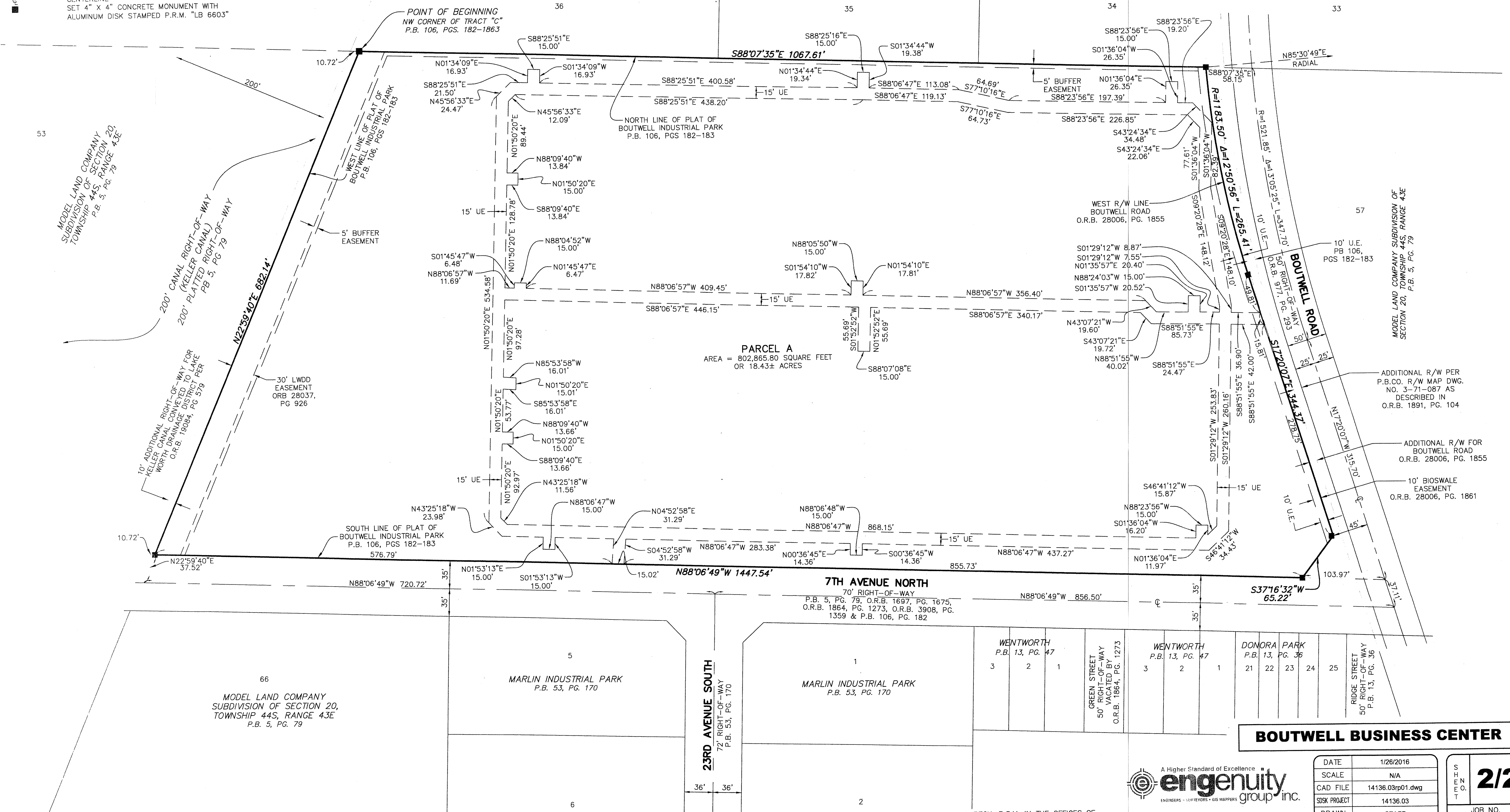
SHARON R. BOCK,
 CLERK AND COMPTROLLER

BY: _____ D.C.

128



- LEGEND**
- DWG DRAWING
 - Δ CENTRAL (DELTA) ANGLE
 - F.S. FLORIDA STATUTES
 - L ARC LENGTH
 - LB LICENSED BUSINESS
 - LWDD LAKE WORTH DRAINAGE DISTRICT
 - O.R.B. OFFICIAL RECORD BOOK
 - P.B. PLAT BOOK
 - P.B.CO. PALM BEACH COUNTY
 - P.R.M. PERMANENT REFERENCE MONUMENT
 - PG(S) PAGE(S)
 - R RADIUS
 - R/W RIGHT-OF-WAY
 - U.E. UTILITY EASEMENT
 - CENTERLINE
 - SET 4" X 4" CONCRETE MONUMENT WITH ALUMINUM DISK STAMPED P.R.M. "LB 6603"



ADDITIONAL R/W PER
 P.B.CO. R/W MAP DWG.
 NO. 3-71-087 AS
 DESCRIBED IN
 O.R.B. 1891, PG. 104

ADDITIONAL R/W FOR
 BOUTWELL ROAD
 O.R.B. 28006, PG. 1855

10' BIOSWALE
 EASEMENT
 O.R.B. 28006, PG. 1861

BOUTWELL BUSINESS CENTER



DATE	1/26/2016
SCALE	N/A
CAD FILE	14136.03rp01.dwg
DSK PROJECT	14136.03
DRAWN	STAFF
CHECKED	K. BECK

2/2

SHEET

JOB NO.
14136.03

THIS INSTRUMENT PREPARED BY KEVIN M. BECK, P.S.M. IN THE OFFICES OF
 ENGENUITY GROUP, INC., ENGINEERS SURVEYORS AND GIS MAPPERS,
 1280 N. CONGRESS AVE., SUITE 101, WEST PALM BEACH, FLORIDA 33409.
 CERTIFICATE OF AUTHORIZATION NO. LB0006603

1280 N. CONGRESS AVENUE, SUITE 101,
 WEST PALM BEACH, FLORIDA 33408
 PH (561)655-1151 • FAX (561)832-9390
 WWW.ENGENUITYGROUP.COM

Y:\Land Projects\14136.03 Boutwell Business Center.dwg\14136.03rp01.dwg 9/30/2016 2:04:22 AM EDT